

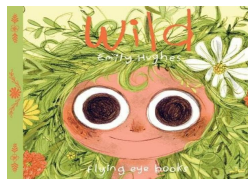
## Making Links to previous learning

We will be revisiting our learning on 'human' and 'physical' features.

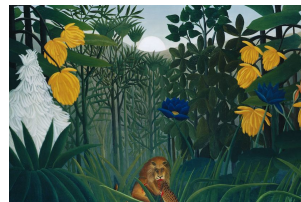
Year 1 term 3 Enquiry - Are animals really that different?

## Who eats who?

This term we will be learning about habitats and who belongs where and why, supported by our core texts.



In Art we will be following the theme 'Flora and Fauna.' Flora is plant life and fauna refers to animals. We will be looking at how this has been reflected by different artists including Henri Rousseau and Jan Van Kessel.



## Key Vocabulary

habitat



is the home of an animal or a plant.

microhabitat



a small area which differs somehow from the surrounding habitat.

herbivores



are animals that only eat plants.

carnivores



are animals that only eat meat.

omnivores

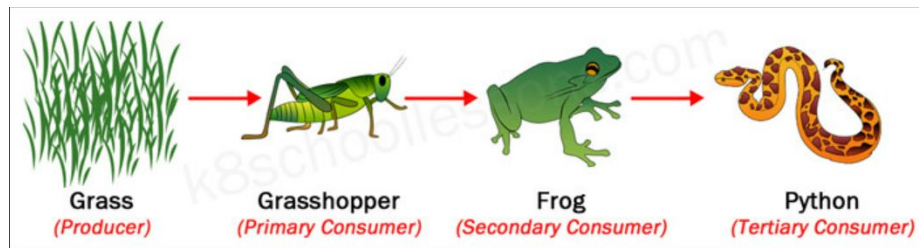


are animals that eat both plants and meat.

food chain

describes the order in which living things depend on each other for food.

## A Food Chain



Producer - can make its own food and is always the first link in the food chain.

Consumer - gets energy by eating something else, either a plant or another animal.

Interdependence - relying on another part of the food chain to live. For example, the frog relies on grasshoppers to stay alive.